

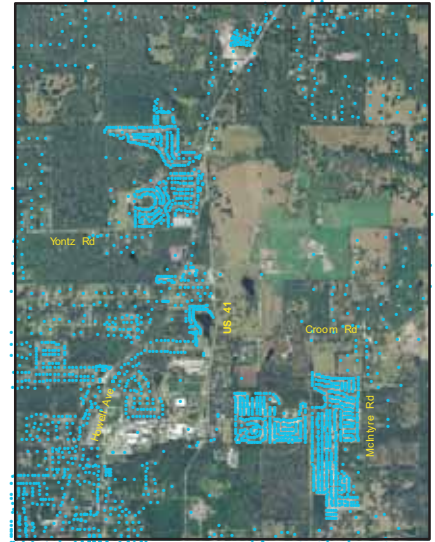
US 19 & Ridge Rd



SR 50 & Mariner Blvd



US 41 & Croom Rd



Hernando County Statistical Abstract: FY 2007-2008

*Density of Development -
Street Address Points:
How Dense Shall We Be??*

*Prepared by: Hernando County Planning Department
20 N Main St - Room 262 - Brooksville, FL 34601
352/754-4057 FAX: 352/754-4420*

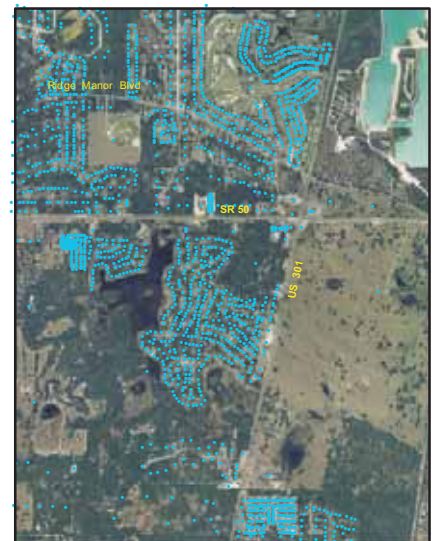
<http://www.hernandocounty.us/plan/abstr2007/contents.htm>



Shoal Line Blvd



County Line Rd & Mariner Blvd



SR 50 & US 301